

Artist • Collector • Gallerist • Activist



BRYANTlamont
@ART_EPIDEMIC

artrevolution600w@gmail.com
www.artepidemic-arteverywhere.com

Bryant Launched STEELELIFEPHOTOGRAPHY in the fall of 1999. His extensive list of clients includes The Congo Square Theatre Company, Abbott Laboratories, Chicago Public Schools, Operation Push and the Chicago Urban League, In 2001, he opened STEELELIFEGALLERYINC., A unique artistic venue in the heart of historic Bronzeville. The gallery features his own works, along with other talented nationally and internationally known photographers, artist and sculptors.

STEELELIFEPHOTOGRAPHY (1999 – Present)

STEELELIFEGALLERYINC. (2001 – 2010)

ARTrevolution (2010 – 2015)

ARTepidemic (2015 – Present)

BRYANTlamont

BLACKTAX

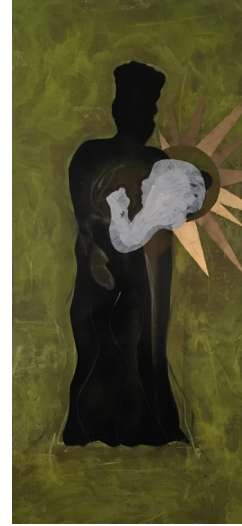
LOVE & KNOWLEDGE



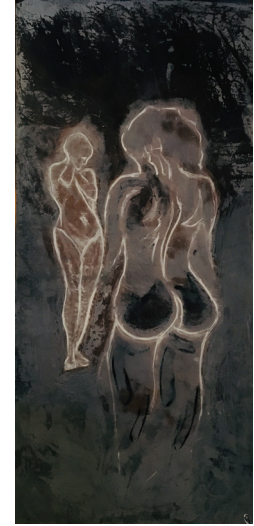
Opening reception Closing reception
April 5, 2019 - May 10, 2019



LOVE & KNOWLEDGE
mixedMEDIA
96 x 96 (diptych)
cost: ONE STACK OF HIGH SOCIETY



THE WETTEST WET NURSE
mixedMEDIA
96 x 48
cost: ONE STACK OF HIGH SOCIETY



AM I SWEET ENOUGH NOW
mixedMEDIA
96 x 48
cost: ONE STACK OF HIGH SOCIETY



GHETTO GODIVA
mixedMEDIA
96 x 96 (diptych)
cost: ONE STACK OF HIGH SOCIETY



PROTECT MY GOLDEN HEART
mixedMEDIA
96 x 96 (diptych)
cost: ONE STACK OF HIGH SOCIETY